

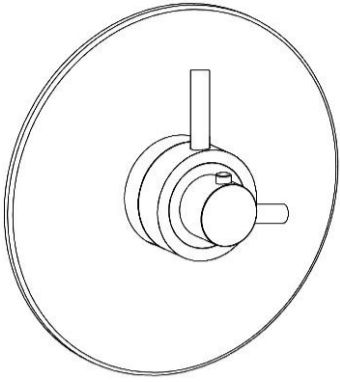
USER MANUAL



Thank you for choosing Better Bathrooms.
Please read this manual before installing your product
and keep for future reference

better
bathrooms

Product name - Concealed Thermostatic Shower Valve
Product code- BeBa_26818



Congratulations on your purchase

And welcome to our growing gang of savvy shoppers

We're on a mission to bring you extraordinary bathroom products, for less. From modern to traditional style ceramics, plus the gorgeous fixtures, fittings and furniture to match. So, you can fall in love with your space every single day.

As one of the UK's largest independent bathroom stores, we've received countless awards; including the National Business Awards UK, the Digital Entrepreneur Awards and being placed on The Sunday Times Fast Track 100.

We hope your new product exceeds your highest expectations. However, if you experience any problems, please:

- log in to your account and contact our customer services team via your self-serve portal-betterbathrooms.com/CustomerAccount/Login.
- contact us via-betterbathrooms.com/content/contact-us.

Important information

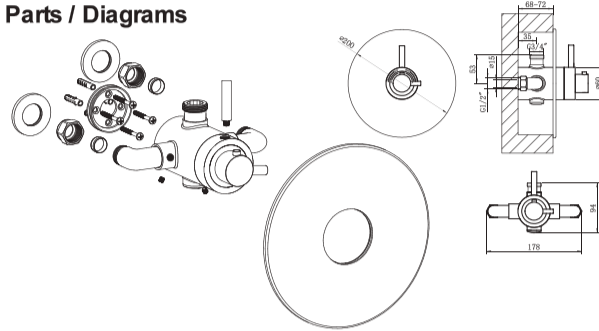
- Please read these instructions thoroughly and retain for future reference
- Water pressures must be balanced. Always ensure to flush the system prior to installation.

Always check walls for pipes and cables before drilling.

Maximum Static Pressure 10 bar
Maximum Working Pressure 5 bar
Minimum Working pressure 0.5 bar
Hot water supply – 55-65c
Cold water supply – 5 -25c
Flow Rates

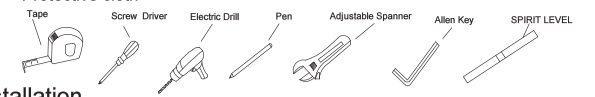
Bar	0.1	0.2	0.5	1	1.5	2
L/Min	3.8	5.2	8.8	12.5	16.5	19

Parts / Diagrams

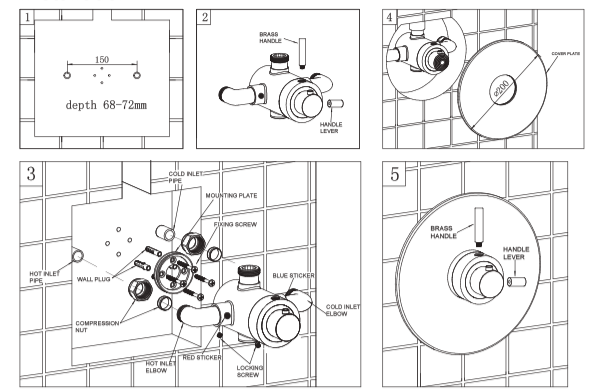


Tools required

- Protective cloth



Installation



The valve should be installed in accordance with the water bye-laws. For further details refer to the latest copy of Water Bye-laws guide or your local water authority.

1. Prepare the recess in the wall to the specified dimensions Fig 1
2. Turn the top lever handle and handle lever anti-clockwise to remove them. (See Fig. 2)
3. Prepare the water supply pipes (hot on the left and cold on the right) at the identified height with a width of 150mm centers. (See Fig. 3)
4. Make the ends of pipes 20-25mm out from the face of wall.
5. Remove the compression nuts and the plates from the inlet elbows.
6. Drill 4X8mm holes on the wall to a depth of 45mm and insert wall plugs.
7. Place the mounting plate against the wall and secure using the screws provided.
8. Place the compression nut and olive over the end of the pipe
9. Offer the mixer to the wall mounting plate (hot inlet to the left) and connect the compression nuts to the mixer elbows.
10. Secure the mixer into position, using the locking screws provided.
11. Tighten the compression nuts onto the elbows.
12. Connect the outlet pipe nut (not supplied) to the mixer for supply to the shower head outlet.
13. Turn on the water supply and check for leaks, before fitting the cover plate.
14. Once checked push the plate over the mixer body, silicone should be applied between the plate and the wall.
15. Once installed and flush with the wall, fit the handles.

- Single-person assembly
- We always recommend using professional tradespeople to install your product

V2_07.12.2021

OPERATION

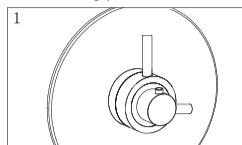
To open the mixer, turn the top lever handle anti-clockwise.
To close the mixer, turn the top lever handle clockwise.

To decrease temperature, turn the bottom lever clockwise.
To increase temperature, turn the bottom lever anti-clockwise.

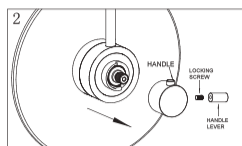
TEMPERATURE SETTING

The temperature control handles on this product are factory set and should require no adjustment.

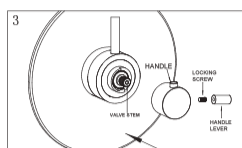
However, if for any reason the handles and/or the cartridge is removed, it is important the following procedures are followed.



- 1) Turn flow control handle to maximum flow position, and temperature control handle clockwise until it contacts the internal limit stop.
- 2) Allow the water temperature to stabilize around 3 minutes and check the temperature by thermometer.
- 3) Proceed if temperature is not 38°C.



- 1) Unscrew the handle lever.
- 2) Unscrew the locking screw.
- 3) Take out the handle.



- 1) Turn on the valve.
- 2) Temperature is up when valve stem is turned clockwise, temperature is down when valve stem is turned anti-clockwise.
- 3) When temperature is correctly set, fix the handle back to the valve as show above.
- 4) Tighten the handle lever with locking screw.

TROUBLE SHOOTING

1. Output water temperature does not correspond with temperature set
Cause: Thermostat has not been adjusted base on the existing home water system
Remedy: Adjust the thermostat , refer to "Temperature Setting" procedure.
Cause: Hot Water temperature too low.
Remedy: Adjust the water heater , increase hot water temperature to 65 °C.
2. Crossflow, cold water being forced into hot water pipe, or vice versa, when valve is closed
Cause: Non-return valves dirty or leaking
Remedy: The elbow including the non-return valve needs to be replaced.

3. Very low flow or no flow

Cause: Supply pressure inadequate

Remedy: Check hot and cold feeds . If a pump has been installed, please check to see if the pump is working.(the valve will shut down if either the cold or hot water supply fails)

4. Water will not run hot enough when first installed

Cause: Wrong maximum temperature setting

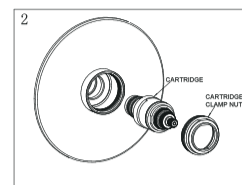
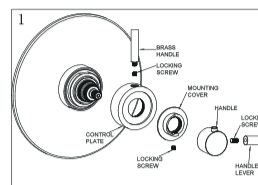
Remedy: Adjust the maximum temperature , refer to "Temperature Setting" procedure.

MAINTENANCE (THERMOSTATIC CARTRIDGE)

* After a period of use, debris or limescale can build up around the filters of the thermostat, which will affect the performance of the product. To resolve this, remove the thermostat from the mixer. Turn off the water supply and turn on the mixer, to drain any water inside.

* To avoid damage, please remove all chrome parts before any maintenance takes place.

- 1) Take off the handle, unscrew the locking screw to take out the mounting cover. Unscrew the brass handle to take off the control plate. (See Fig. 1)
- 2) Untighten the cartridge clamp nut to take out the cartridge. (See Fig. 2)
- 3) Wash the cartridge with clean running water, dry and lightly grease the seals (only use silicone grease).
- 4) Replace the cartridge and make sure it back to the primary position.



CLEANING

To maintain the surface of your product, wipe with a clean damp cloth and wipe dry. Do not use abrasive cleaning agents or materials which can strip and scratch the surface; the use of these agents or materials can invalidate your guarantee. It is recommended to wipe and dry on a regular basis.

For more information

- visit betterbathrooms.com
- email customerservices@buyitdirect.co.uk
- call 03303903062
- write to Trident Business Park, Neptune Way, Huddersfield, HD2 1UA.

**better
bathrooms**

Part of the BuyItDirect Group